

Pegler ProFlow dynamic control valve PICV (2 x female thread)

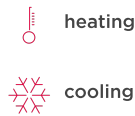


group: 1600 **category:** afsluiters **product line:** Pegler ProFlow Dynamic

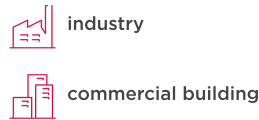
The type 1600, Pegler ProFlow Pressure Independent Control Valve (PICV), is designed to eliminate existing heating and cooling system issues, saving significant time and money. Pegler ProFlow PICV's are supplied in bypass configuration. Valves can be installed and flushed (forward and backward) at full bore prior to commissioning with the PICV mechanism safely out of the way. Once the system is clean and ready to commission, a simple rotation of the PICV head introduces the valve into the flow, and rotates the bypass out of the way. Type Pegler ProFlow PICV valves are available with several connection technologies.

- ensures bypass/flushing have been actioned to prevent future issues
- utilise as isolating valve; no need for ball valve inline
- less time removing cartridges for flushing
- includes test points
- hot swap of inserts
- visible setting indication with actuator on

applications



segments



approvals

no approvals available

assortment

code	size	weight	dimensions	packaging	gtin
16001	G1/2" (DN15) LF	0.9 kg	153x65x96 mm	bag (1 pce)	05022050605375
16002	G1/2" (DN15) SF	0.88 kg	153x65x96 mm	bag (1 pce)	05022050605405
16003	G1/2" (DN15) HF	0.89 kg	153x65x96 mm	bag (1 pce)	05022050605436
16004	G3/4" (DN20) SF	1.47 kg	188x104x104 mm	bag (1 pce)	05022050605467
16005	G3/4" (DN20) HF	1.5 kg	188x104x104 mm	bag (1 pce)	05022050605498
16006	G1" (DN25) SF	1.5 kg	188x116x116 mm	bag (1 pce)	05022050605528

specifications - product info

item	Pegler ProFlow dynamic controll valve PICV (2 x female thread)
item number with gtin	1600
manufacturer	Aalberts integrated piping systems Ltd (Pegler)
weight	1.5 kg
dimensions	188x116x116 mm

specifications - characteristics

color	black
materials	brass (CW511L (lead-free))
finishing	powder
shape	straight
connection type	G - female thread gas cylindrical (BSPP)
pressure rating (PN)	PN 16
sealing	EPDM

specifications - technical

max operating pressure liquid	16 bar
min. medium temperature	-10 °C
max medium temperature	90 °C
peak medium temperature	90 °C

specifications - general

product group	valves (dynamic balancing valves)
ETIM class	EC011463 Regulating valve
HS code	84818099
brand	Pegler
series	ProFlow Dynamic
product type	1600
UNSPS	40141609

dimensions

code	size	d1	DN1	l1	z1	slw1	d2	DN2	l2	z2	slw2	H
16001	G1/2" (DN15) LF	21.3	1/2" (DN15)	48	29	27	21.3	1/2" (DN15)	48	29	27	90
16002	G1/2" (DN15) SF	21.3	1/2" (DN15)	48	29	27	21.3	1/2" (DN15)	48	29	27	90
16003	G1/2" (DN15) HF	21.3	1/2" (DN15)	48	29	27	21.3	1/2" (DN15)	48	29	27	90

code	size	d1	DN1	l1	z1	slw1	d2	DN2	l2	z2	slw2	H
16004	G3/4" (DN20) SF	26.9	3/4" (DN20)	52	33	32	26.9	3/4" (DN20)	52	33	32	105

16005	G3/4" (DN20) HF	26.9	3/4" (DN20)	52	33	32	26.9	3/4" (DN20)	52	33	32	105
-------	-----------------------	------	----------------	----	----	----	------	----------------	----	----	----	-----

16006	G1" (DN25) SF	33.7	1" (DN25)	58	42	40	33.7	1" (DN25)	58	42	40	105
-------	---------------------	------	--------------	----	----	----	------	--------------	----	----	----	-----

code	size	Y	V	U	a
16001	G1/2" (DN15) LF	29	38	49	90

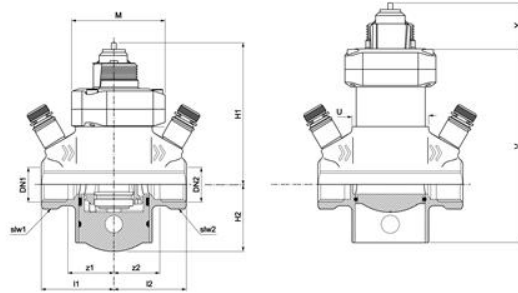
16002	G1/2" (DN15) SF	29	38	49	90
-------	-----------------------	----	----	----	----

16003	G1/2" (DN15) HF	29	38	49	90
-------	-----------------------	----	----	----	----

16004	G3/4" (DN20) SF	32	50	60	90
-------	-----------------------	----	----	----	----

16005	G3/4" (DN20) HF	32	50	60	90
-------	-----------------------	----	----	----	----

16006	G1" (DN25) SF	32	50	60	90
-------	---------------------	----	----	----	----



sustainability

code	carbon footprint (A-C) embodied carbon	data source
16001	4.42kgCO ₂ e	TM65
16002	4.42kgCO ₂ e	TM65
16003	4.41kgCO ₂ e	TM65
16004	6.99kgCO ₂ e	TM65
16005	6.89kgCO ₂ e	TM65
16006	8.49kgCO ₂ e	TM65

downloads

- 📄 1600 - png
- 📄 Pegler ProFlow Price List - pdf
- 📄 Diagram - jpg
- 📄 Pegler ProFlow Technical Manual - pdf
- 📄 Pegler_ProFlow_PICV_1600_30sec - mp4
- 📄 Pegler_ProFlow_PICV_1600 - mp4
- 📄 Pegler_ProFlow_PICV_1600_training_video - mp4
- 📄 Specification_Pegler_ProFlow_PICV_1600 - pdf
- 📄 Apollo_ProFlow_dynamisch_1600-prescription_text-EN - docx